



BUFFELSDRIFT

GAME LODGE



**BUFFELSDRIFT GAME LODGE
ACTIVITIES**



FREE ROAMING CHEETAH EXPERIENCE

In April 2020, we welcomed South African cheetahs to the reserve and introduced them to our guests. After spending two years settling into their new home, they have fully adapted and grown comfortable in their surroundings as part of the reserve family. Our goal is to provide an educational platform where visitors can learn more about this incredible predator in its natural habitat.

We are committed to raising awareness around conservation through hands-on learning experiences, offering guests a memorable, once-in-a-lifetime opportunity. Buffelsdrift Game Lodge is also involved in the Endangered Wildlife Trust's Cheetah Meta-population Project, supporting efforts to strengthen and expand free-roaming cheetah populations across Southern Africa.

Like many large carnivores, cheetahs face ongoing threats due to human-wildlife conflict, particularly from livestock farming. Protecting and maintaining suitable habitat for them remains a major conservation challenge. By participating in this initiative, Buffelsdrift Game Lodge helps preserve natural environments and supports the long-term survival of this species in the wild.

Guests have the opportunity to track free-roaming cheetahs on foot or by vehicle, experiencing them in their natural environment here at Buffelsdrift Game Lodge.

ACTIVITY INFORMATION:

Outfit: Long Tracksuite

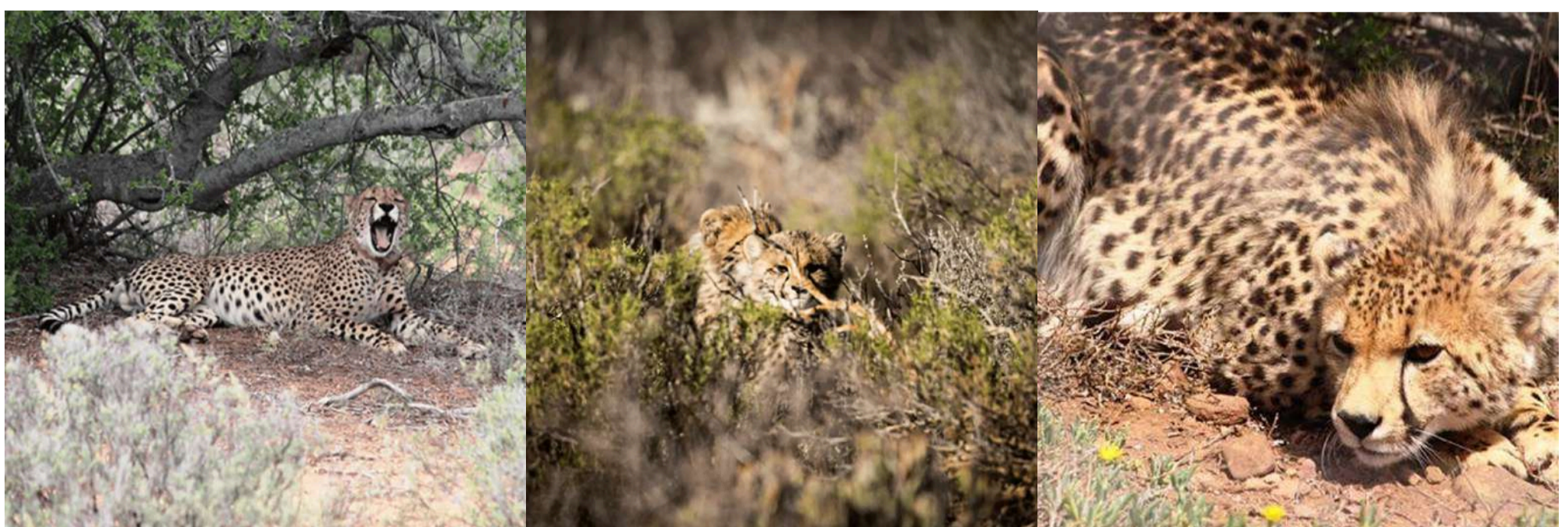
Age Limit: Min age of 12 yrs/Min height of 1.2m

Duration of Activity: 3 – 4 Hours

Meeting Point: Look-out Lounge @ 08:00 (have to leave Zwartberg Mountain View Lodge 7h00)

What to Bring: Sunblock, Hiking shoes (no sandals or flip flops), Preferably long trousers, Hat, Small Backpack, ,Water, Binoculars / Camera and Appropriate medication for personal medical conditions.

****CONTACT VARLEY/ZWARTBERGVIEW MOUNTAIN LODGE FOR RESERVATIONS****





AFRICAN SAFARIS

Bush Safari

Buffelsdrift Game Lodge offers Bush Safaris to both residents and day visitors. These guided experiences focus not only on the region's wildlife, but also on its birdlife and indigenous plant species. Guests explore authentic Karoo vegetation from open safari vehicles and may encounter animals such as giraffe, buffalo, zebra, eland, springbok, hippo, and more. The approximately two-hour drive includes a stop at a scenic viewpoint with sweeping 360° views of the surrounding landscape and the Swartberg Mountains.

Night Drives

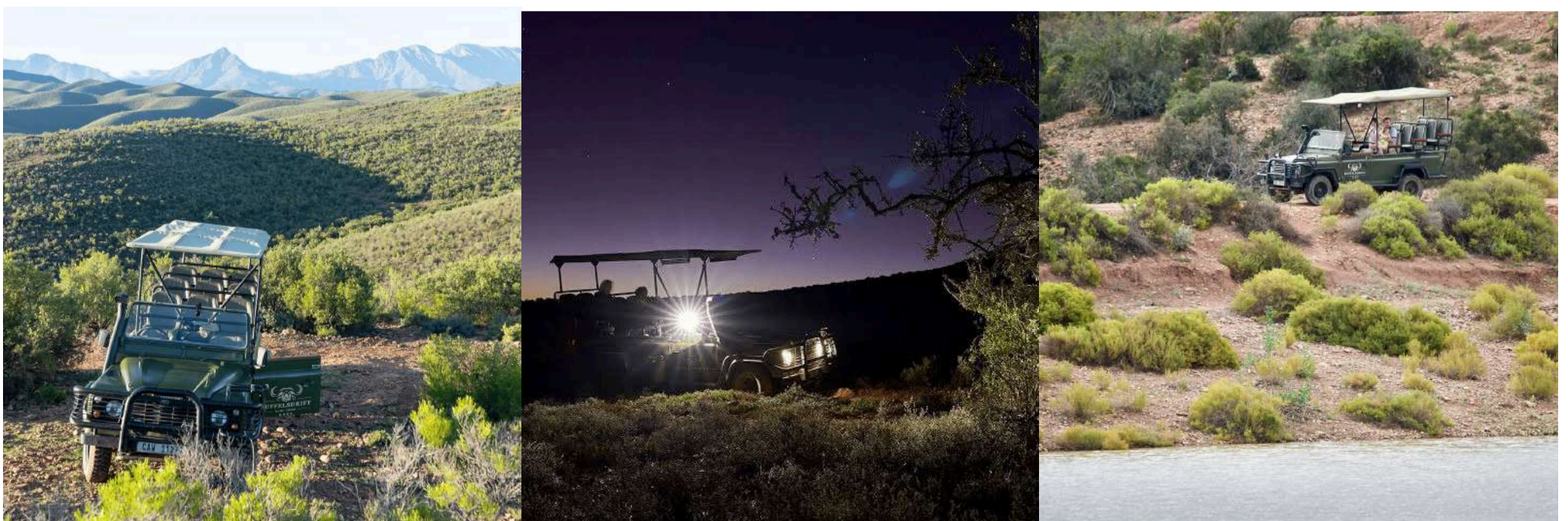
Buffelsdrift Game Lodge offers Bush Safaris to both residents and day visitors. These guided experiences focus not only on the region's wildlife, but also on its birdlife and indigenous plant species. Guests explore authentic Karoo vegetation from open safari vehicles and may encounter animals such as giraffe, buffalo, zebra, eland, springbok, hippo, and more. The approximately two-hour drive includes a stop at a scenic viewpoint with sweeping 360° views of the surrounding landscape and the Swartberg Mountains.

ACTIVITY INFORMATION:

Duration of Activity: 2 Hours

Meeting Point: Look-out Lounge @ 9h00 (have to leave Zwartberg Mountain View Lodge 8h00) or @15h00 (have to leave Zwartberg Mountain View Lodge 14h00)

****CONTACT VARLEY/ZWARTBERGVIEW MOUNTAIN LODGE FOR RESERVATIONS****





ELEPHANT EXPERIENCE

Buffelsdrift Game Lodge is home to a small herd of elephants that play an important role in our conservation and education efforts. None of our elephants were taken from the wild for captivity. The three individuals in our care were orphaned due to poaching. Without intervention, they would not have survived. We chose to give them the best possible life within our means, with dedicated care, comfort, and enrichment.

Our elephant experiences are educational in nature, allowing guests to learn more about these intelligent and gentle animals. We are privileged to care for them at Buffelsdrift Game Lodge, where elephants are known for their unique character and social nature.

Elephant Experience

From the viewing deck, guests observe and may assist with feeding under guidance from our trained team. This 30-minute guided experience includes insights from our elephant guides into behaviour, care, and personalities. Sessions run hourly from 09:00 to 15:00. Guests must arrive 15 minutes early; late arrivals over 15 minutes are cancelled and rebooked.

Elephant Observation Experience

Guests observe elephants roaming freely in their natural environment while guides share insights about these gentle giants. This 45-minute guided experience focuses on natural behaviour from a distance, with the option to continue into the Elephant Experience afterwards.

****CONTACT VARLEY/ZWARTBERGVIEW MOUNTAIN LODGE FOR RESERVATIONS****

MEET OUR ELEPHANTS



Jabari

Meaning "Powerful" (Jabari is the youngest & naughty one)



Bulelo

Meaning "Thank You" (Bulelo is the older & bigger bull)



Malaika

Meaning "Angel" (Absolute matriarch, she rules over the males)



ELEPHANT EXPERIENCE

Three young lions were relocated to Buffelsdrift Game Lodge after intensive preparation and collaboration with conservation partners including N/a'an ku sê – Conservation, Cape Nature, and local veterinary support. They were moved from a smaller enclosure in the Western Cape to a larger and more suitable habitat where they could thrive. Born in captivity these lions cannot be released into the wild but now live in a secure environment that prioritises their wellbeing. A portion of funds generated through the experience supports conservation initiatives and local community education.

ACTIVITY INFORMATION

Guests will be transported in a game vehicle to the 5ha lion enclosure where they will see our lions (Shumba, Tonga and Safia) close-up from the elevated view point. A trained game ranger will feed the lions while guests view them. It is advisable to have a camera at hand. Furthermore, the game ranger will fully inform the guests regarding important aspects of lions in general.

General Guidelines

- These are wild Lions and will not be touched or handled by humans, including the rangers.
- Maximum of 20 guests per Lion experience. Book in advance to avoid disappointment.
- Duration of the Lion viewing experience may vary depending on their behaviour (± 1-2 hours)

****CONTACT VARLEY/ZWARTBERGVIEW MOUNTAIN LODGE FOR RESERVATIONS****

MEET OUR LIONS



Shumba

meaning "Lion" in Shona (He is the male and the brother of the females)



Tonga

meaning "Rule" in Shona (She has the outgoing personality)



Safia

meaning "Pure and Wise" in Swahili (She is the shy but playful one)



HERITAGE NATURE WALK

Strap your boots on and experience a 5km guided trail designed to connect you with the Little Karoo through all your senses. The walk moves through dramatic red rock formations while your qualified guide shares the geological history of the region, formed millions of years ago.

Feel the terrain underfoot, take in the natural scents, and enjoy the chance to spot wildlife and birdlife from a safe distance with expert interpretation along the way. The trail continues through dense Karoo veld to a historical cave featuring ancient San rock art, where stories of the Bushman people and their life in the “land of thirst” are shared while overlooking the vast Little Karoo plains.

ACTIVITY INFORMATION:

Trail difficulty : Casual +/- 5km walk

Duration : +/- 4 Hours (depends on group's pace)

Departure Times : 06:00 (summer) 08:00 (winter) Guests meet at the main lodge, from where you depart in one of our gameviewers towards the starting point of the trail.

Number of Guests : 8 Max Min Pax : 2 Pax

Age Limit : Min of 12 Years of age

Breakfast : Breakfast pack, juice and water included

What To Bring:

Sunblock, Hiking shoes (no sandals or flip flops), Preferably long trousers, Hat, Small Backpack, Water, Binoculars, Appropriate medication for personal medical conditions

****CONTACT VARLEY/ZWARTBERGVIEW MOUNTAIN LODGE FOR RESERVATIONS****

